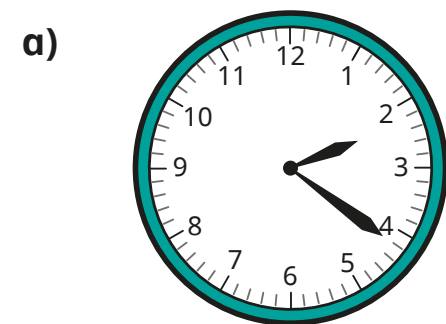


Tell the time to the minute

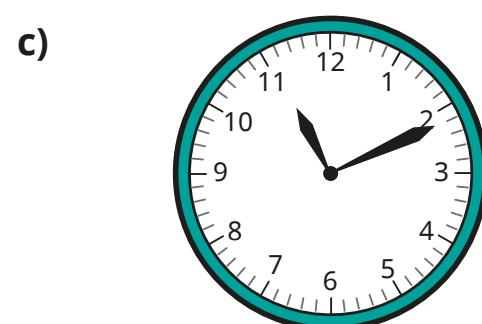
1 Complete the sentences.

- a) When the minute hand is pointing to 4, it is minutes past the hour.
- b) When the minute hand is pointing to 5, it is minutes past the hour.
- c) When the minute hand is pointing to 7, it is minutes past the hour.

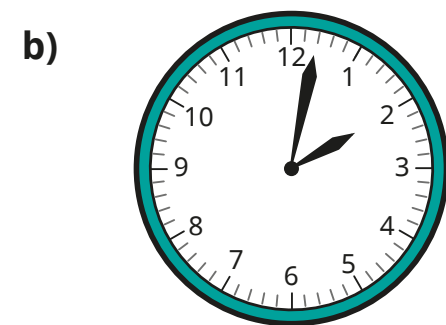
2 What time is shown on each clock?



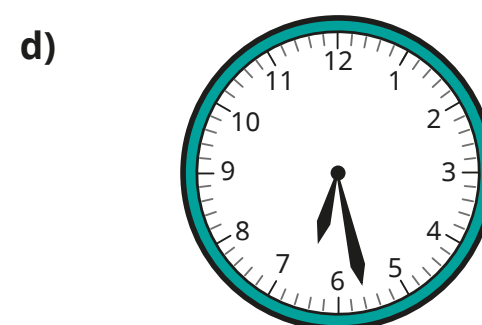
minutes past 2



minutes past



minutes past 2



3 Complete the additions.

a) $51 + \square = 60$

d) $43 + \square = 60$

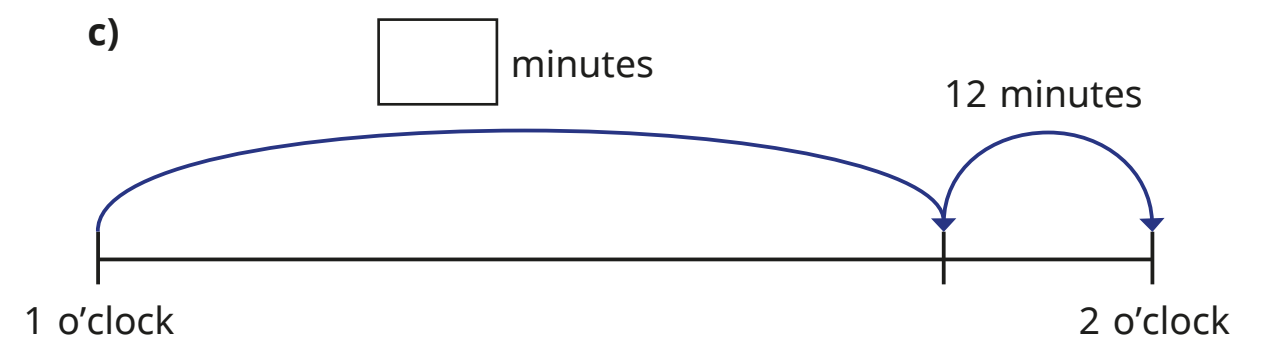
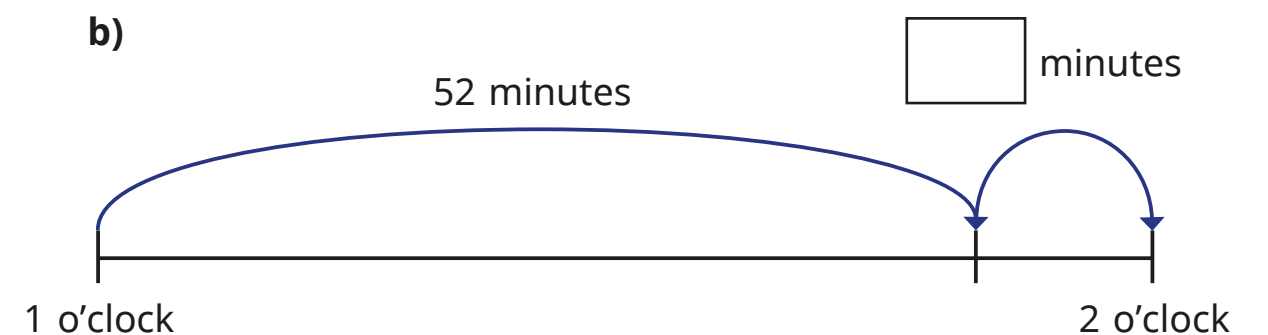
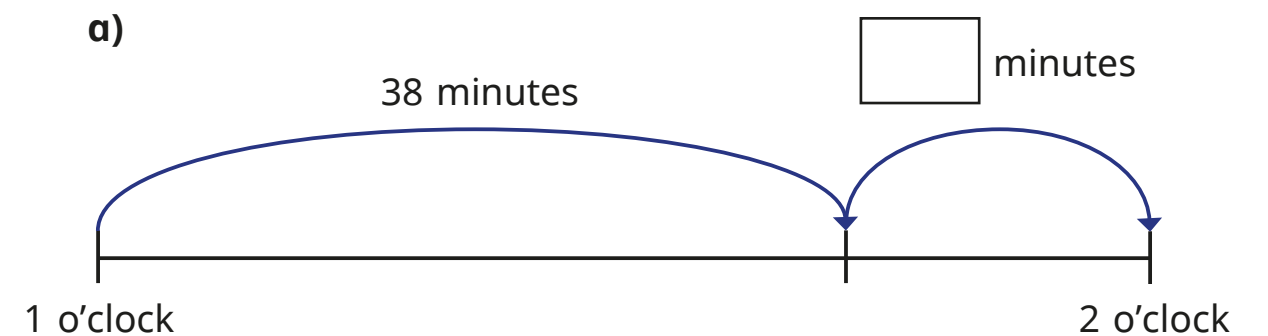
b) $31 + \square = 60$

e) $48 + \square = 60$

c) $39 + \square = 60$

f) $\square + 11 = 60$

4 Write the missing minutes on the number lines.



5 Complete the times to make the statements correct.

a) 51 minutes past 1 = minutes to 2

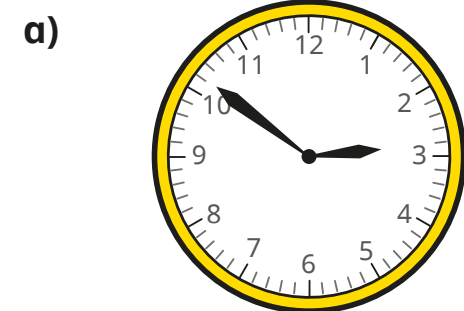
b) 51 minutes past 7 = minutes to

c) 34 minutes past = minutes to 8

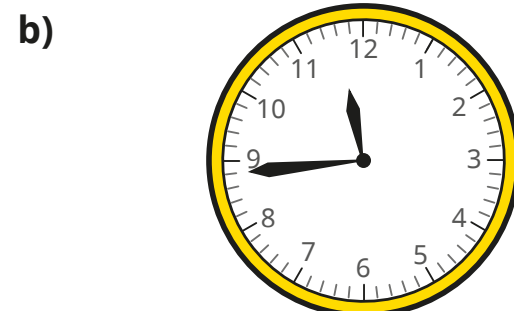
d) 44 minutes past 12 = minutes to

e) minutes past = 1 minute to 10

6 Complete the times shown on each clock.



minutes past 2
 minutes to 3



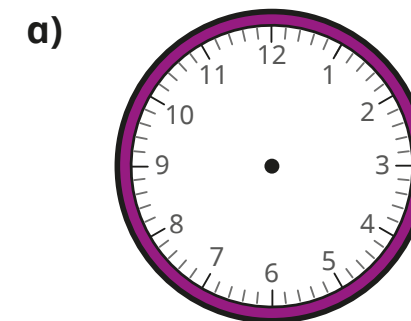
minutes past
 minutes to

7 The time is 55 minutes past 7, so it is 45 minutes to 8

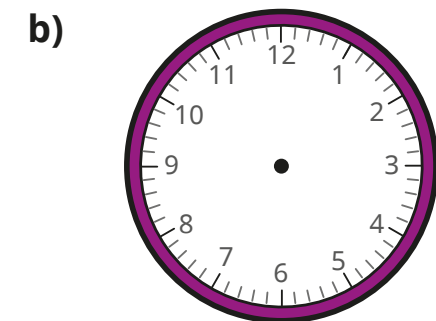
a) What mistake has Rosie made?

b) What is the correct time?

8 Draw the hands on the clocks to show the times.

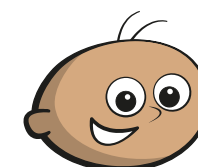
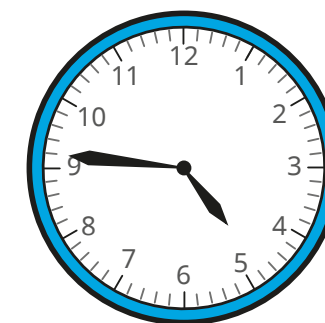


28 minutes to 6



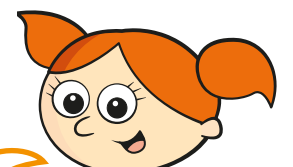
6 minutes to 12

9 Tommy, Whitney and Alex are telling the time.



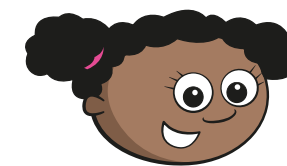
It is 4 minutes to 5

Tommy



It is 14 minutes to 5

Alex



It is 24 minutes to 5

Whitney

Who is correct?

