

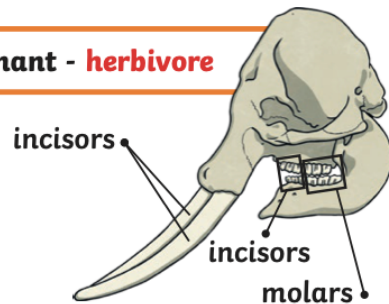


# Science - Advent 1

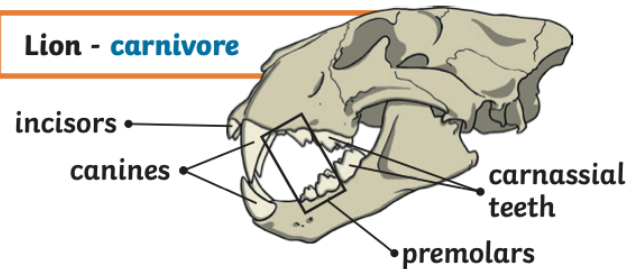
## The Digestive System

The teeth of an animal are designed to eat different foods depending on the diet of the animal. Examples of a **herbivore**, a **carnivore** and an **omnivore** skull:

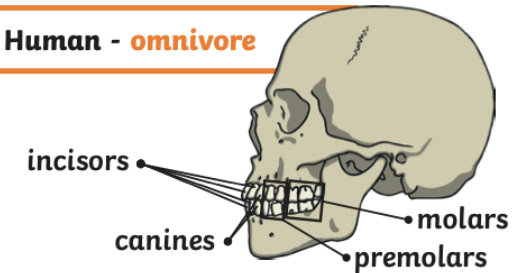
**Elephant - herbivore**



**Lion - carnivore**

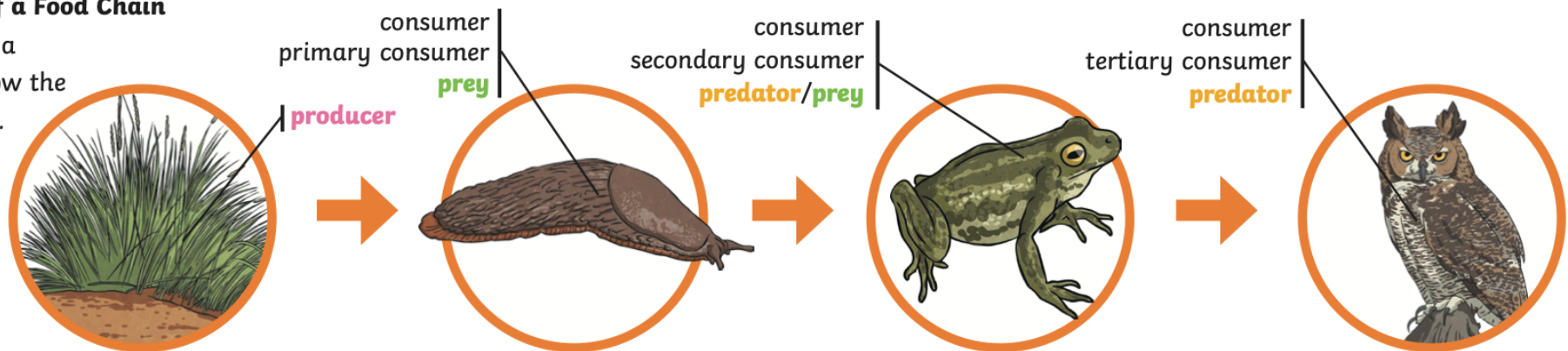


**Human - omnivore**

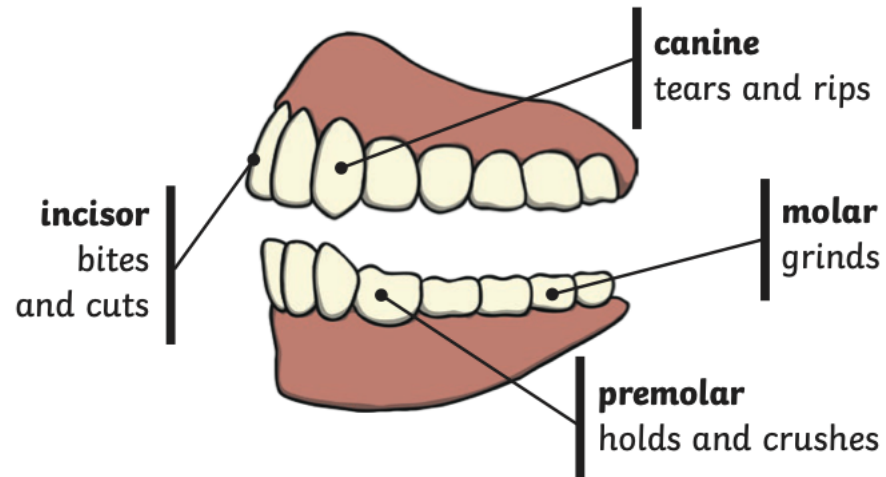


### **An Example of a Food Chain**

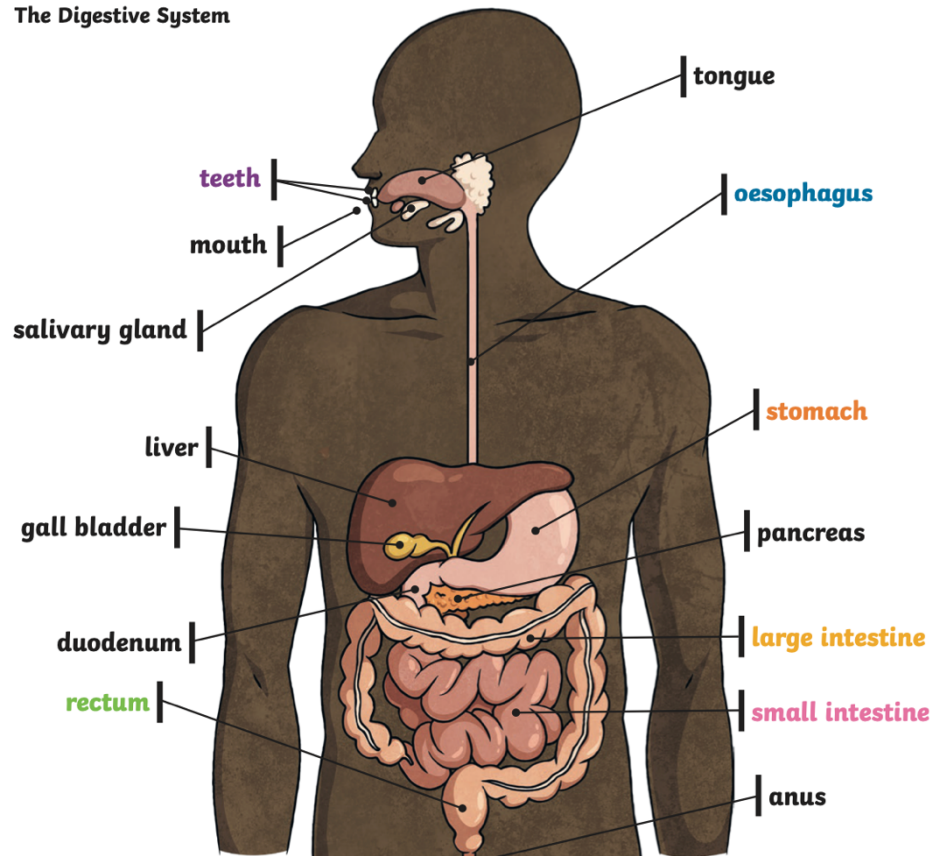
The arrows in a food chain show the flow of energy.



## Human Teeth and Their Functions



## The Digestive System



## Glossary

**carnivore** - an animal that feeds on other animals.

**herbivore** - an animal that eats plants.



**omnivore** - an animal that eats plants and animals..

**predator** - an animal that hunts, kills and eats other animals for food.



**prey** - an animal that is killed by another animal for food.