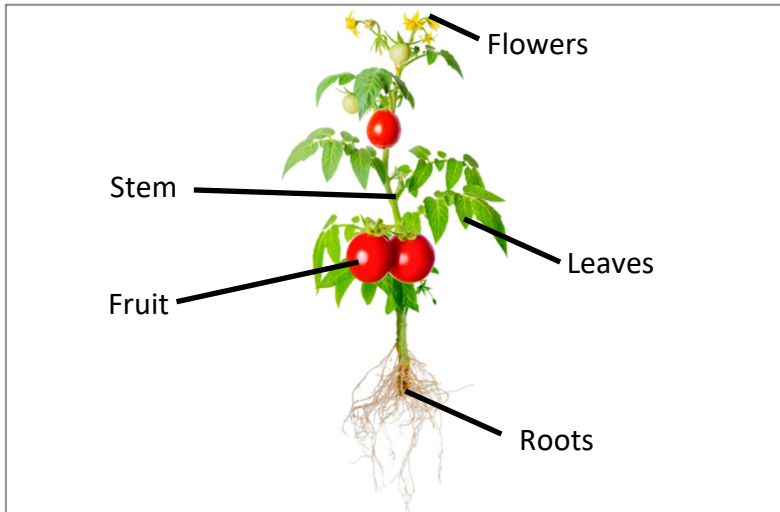


Plant Nutrition and Reproduction

Science

Parts of a plant:



Roots have two jobs. They keep the plant in the ground and take in water and nutrients from the soil.

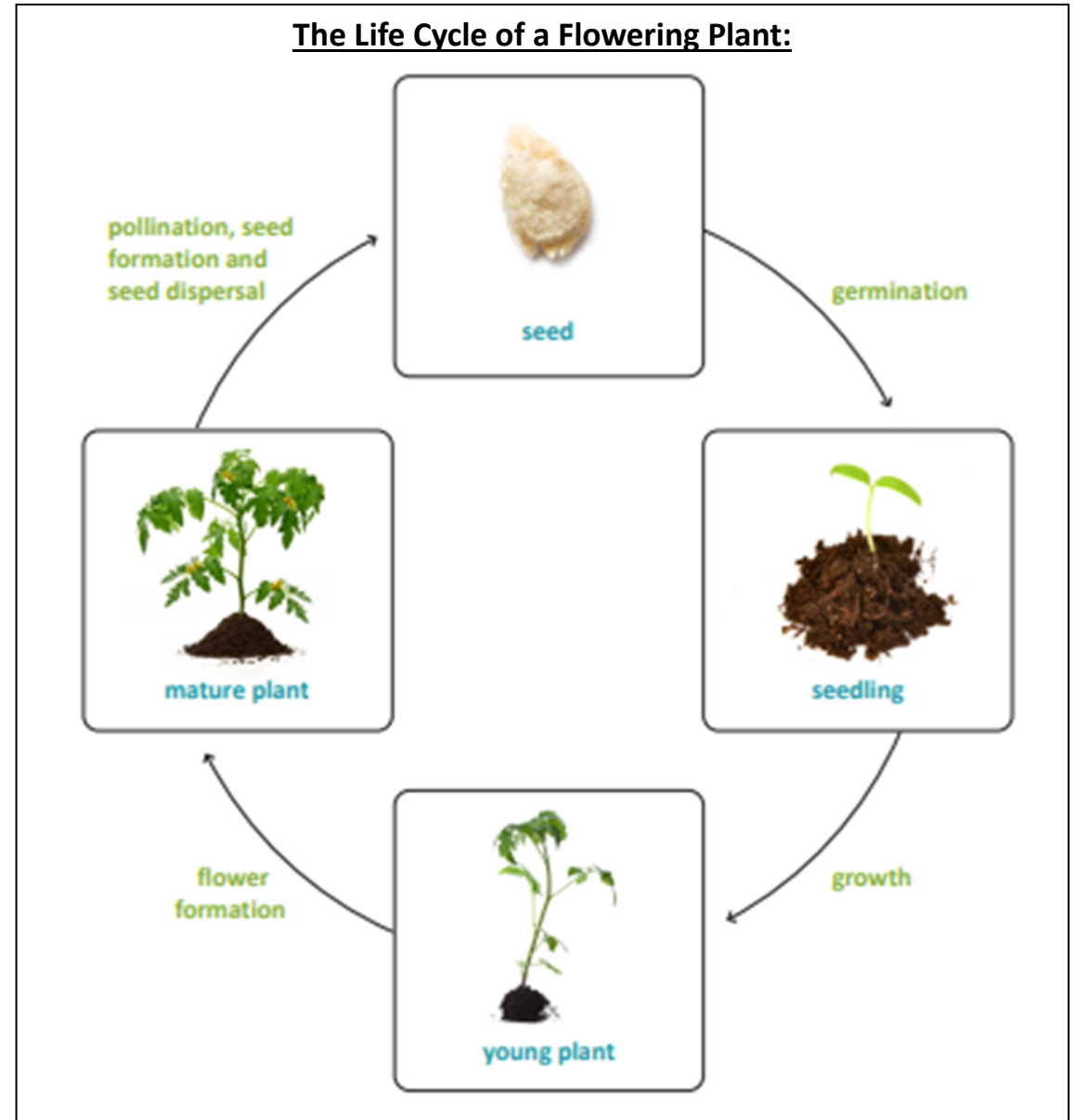
Stems have two jobs. They keep the plant upright and transports water and nutrients around the plant.

Leaves have two jobs. They make food for the plant through photosynthesis and help the plant take in water.

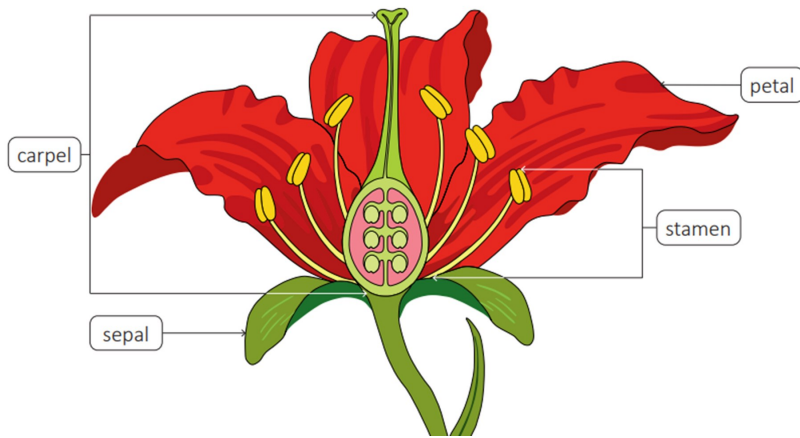
Flowers make seeds that can grow into new plants after reproduction.

Fruit help seeds from the plant grow into new plants when animals eat them and deposit the seeds in their droppings.

The Life Cycle of a Flowering Plant:



Parts of a flower:



Petal—Petals surround the reproductive parts of flowers. They are often brightly colored or unusually shaped to attract pollinators.

Carpel— The female reproductive organ of a flower, found in the centre.

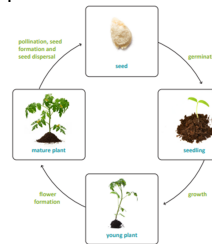
Stamen— The male organ of a flower, typically consisting of a pollen.

Sepal—They are usually green and support the petals of a flower.

Glossary

Flower formation: When flowers grow and form on plants.

Germination: The process of a plant beginning to grow from a seed.



Life Cycle: A series of changes that happen to a living thing during its lifetime.

Pollination: The transfer of pollen from one plant to another.

Pollinator: An animal that pollinates flowering plants.

Seed dispersal: The movement, spread or transport of seeds away from the parent plant.

